

Single 10/100 BASE-TX Filtered Connector Module MODEL NO. : RJLB-038TC1

Features

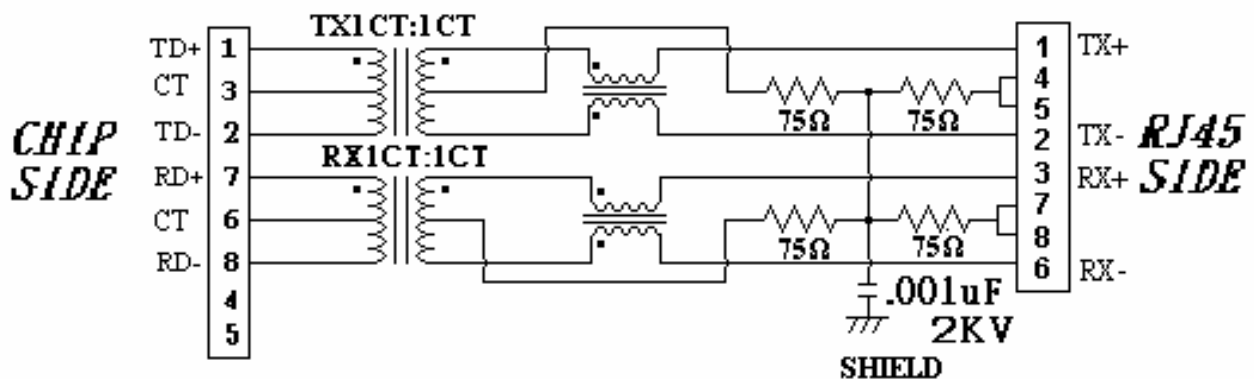
RoHS Compliant

- ⊙ Fully shielded magnetics protect data from internally generated digital noise.
- ⊙ Reduces the overall length of the signal path for improved common mode performance.
- ⊙ Implements full common mode termination scheme with used and unused twisted pairs.
- ⊙ Meets IEEE802.3 Baseline Wander Compensation specification.
- ⊙ Integrates high voltage capacitor to chassis ground.
- ⊙ Supports all major transceivers with matched turns ration and complete integration of specified termination.
- ⊙ Suitable for CAT5&6 Fast Ethernet Cable or better UTP.
Design for 100base-tx transmission over UTP-5 cable
Operating TEMP. range: -40°C to +85°C
Storage TEMP. range: -55°C to + 125°C
- ⊙ Primary OCL inductance: 350μH MIN. at 100KHz/0.1Vrms with 8mA DC bias.
- ⊙ With the LED lamp.

Typical Performance Characteristics @ 25

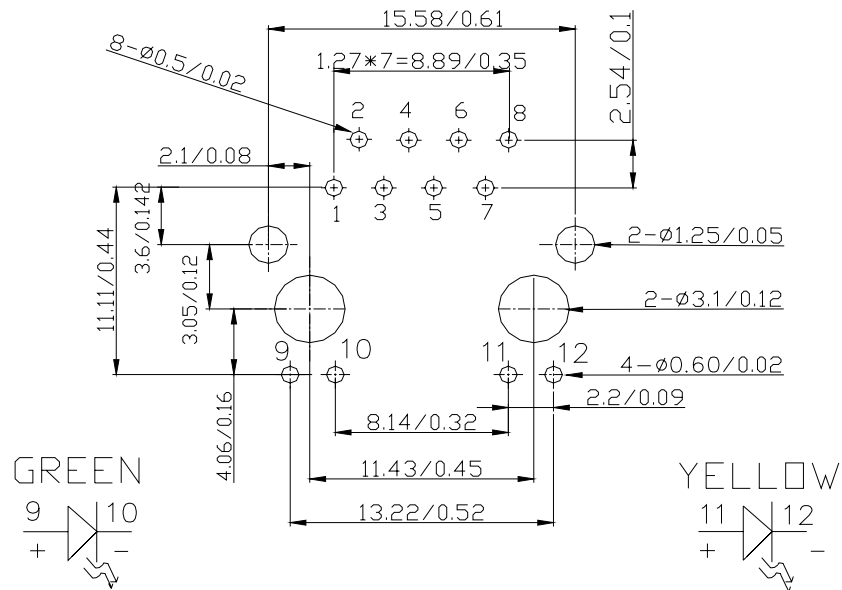
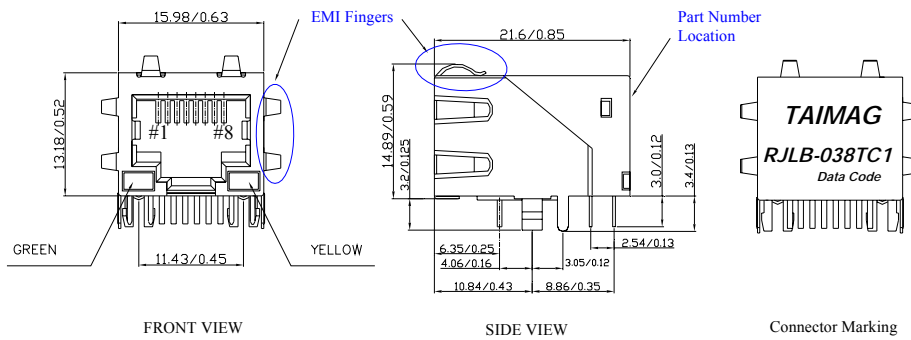
Insertion Loss (dB MAX)	Return Loss (dB Min @100±15Ω)				Differential to Common Mode Rejection (dB MIN)	Cross talk (dB MIN)					CMRR (dB MIN)	Isolation Voltage (Vrms min)
	MHz	MHz	MHz	MHz		MHz	MHz	MHz	MHz	MHz		
1~100	1~30	40	50	60~80	1~100	20	40	60	80	100	1~100	1500
-1.0	-16	-14	-12	-10	-33	-47	-40	-37	-35	-33	-30	

Schematic Design on MDI Interface Circuitry



MODEL NO. : RJLB-038TC1

Dimension : mm/inches (Unless otherwise specified ,all Tolerances : $\pm 0.25 / 0.01$)



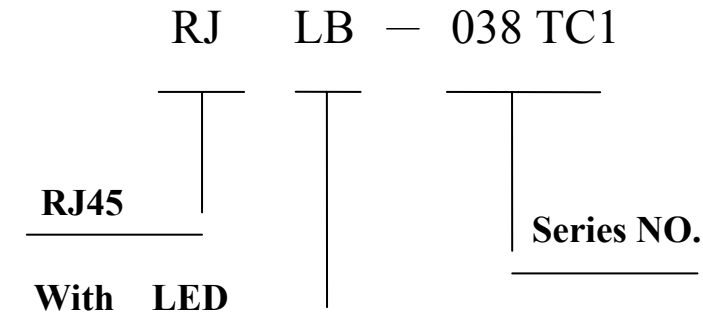
RECOMMENDED P.C.B LAYOUT
COMPONENT SIDE OF BOARD



NUMBER : RD-SDRJLB-038TC1
DATE :2005/09/09 -I (REV:A1)

MODEL NO. : RJLB-038TC1

Ordering Information



Requirements :

1. Design and Construction

Product shall be of design, construction and physical dimensions specified on applicable product drawing.

2. Materials and Finish

A. Contact:

RJ Contact : Phosphor Bronze, Thickness=0.30mm

Finish : Contact Area : 6 μ "min. Gold over 50 μ "min. Nickel

RJ Joint Contact : Phosphor Bronze, Thickness=0.30mm

Finish : 80 μ "min. Sn over 50 μ "min. Nickel

LED Joint Contact : Phosphor Bronze, Thickness=0.50mm

Finish : 80 μ "min. Sn over 50 μ "min. Nickel

B. Plastic Part :

(1) Set Housing : Thermoplastic, PBT, Black

UL FILE NO. : E107536

Manufacturer : SHIKONG SYNTHETIC FIBERS CORP.

Grade : E202G30BK

Flame Class : UL 94V-0

(2) Insert : Thermoplastic, PBT, Black

UL FILE NO. : E107536

Manufacturer : SHIKONG SYNTHETIC FIBERS CORP.

Grade : E202G30BK



NUMBER : RD-SDRJLB-038TC1
DATE :2005/09/09 -I (REV:A1)

MODEL NO. : RJLB-038TC1

Flame Class : UL 94V-0

(3) Spacer : Thermoplastic, PBT, Black

UL FILE NO. : E107536

Manufacturer : SHIKONG SYNTHETIC FIBERS CORP.

Grade : E202G30BK

Flame Class : UL 94V-0

C. Shield Material :

Cartridge $t=0.25\text{mm}$

$10\ \mu\text{m}$ - $20\ \mu\text{m}$ Thick Nickel over Brass

D. LED Lamp

(a) Lens Color : Transparent with color

(b) Emitted Color : Green & Yellow

(c) View Angle : 65°

(d) Wave Length : Green 565nm ; Yellow 585nm

(e) Recommended operation current (IF) : 20 mA

3. Ratings

(1) Voltage rating : 125 VAC

(2) Current rating : 1.5A

Durability :

(1) 1000 cycles with no function damage for RJ-45 . Abnormalities shall be present after the test.

(2) Low Level Contact Resistance : $\Delta R=30\text{m}\Omega$ maximum (final)

(3) The sample should be mounted in the tester and fully mated and unmated 500 times per hour at the rate of 25mm/min. EIA-364-09C.



NUMBER : RD-SDRJLB-038TC1
DATE :2005/09/09 -I (REV:A1)

Model NO.: RJLB-038TC1

1. Unit weight :20.6 grams
2. package : 50 pcs / tray / 1.07 kgms
3. Carton : 500 pcs / 10 layers of tray
4. Gross weight : 11.393 kgms

Package drawing:

