

## 10/100/1000 BASE FILTER WITH DUAL USB 2.0 CONNECTOR

### Model NO.: RJLUG-011TA1

#### Feature:

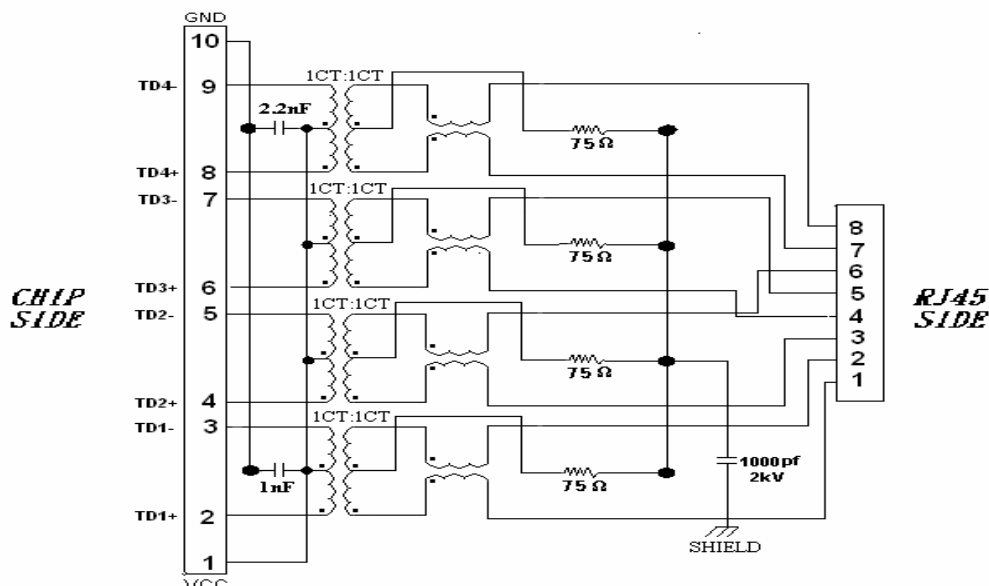
#### ◎ RoHS Compliant

- Fully shielded magnetics protect data from internally generated digital noise
- Reduces the overall length of the signal path for improved common mode performance
- Implements full common mode termination scheme with used and unused twisted pairs
- Meets IEEE802.3 Baseline Wander Compensation specification
- Integrates high voltage capacitor to chassis ground
- Supports all major transceivers with matched turns ration and complete integration of specified termination
- Design for 1000BASE-tx transmission over UTP-5 cable.
- Operating TEMP. range: -40 to +85
- Storage TEMP. range: -55 to + 125
- Primary OCL inductance: 350uH MIN. at 100KHz/0.1Vrms with 8mA DC bias..
- With the LED lamp.

#### Typical Performance Characteristics@ 25

Insertion Loss (dB MAX)	Return Loss (dB Min @100±15Ω)					Differential to Common Mode Rejection (dB MIN)	Cross talk (dB MIN)					CMRR (dB MIN)	Isolation Voltage (Vrms min)
	MHz						MHz	MHz					
1~100	1~30	40	50	60~80		1~100	20	40	60	80	100	1~100	1500
-1.0	-16	-14	-12	-10		-33	-47	-40	-37	-35	-33	-30	

#### Schematic Design on MDI Interface Circuitry



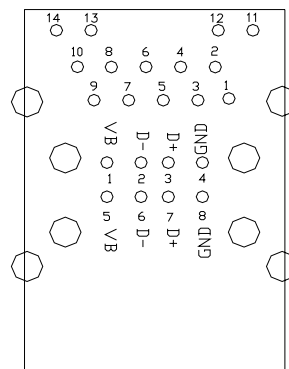
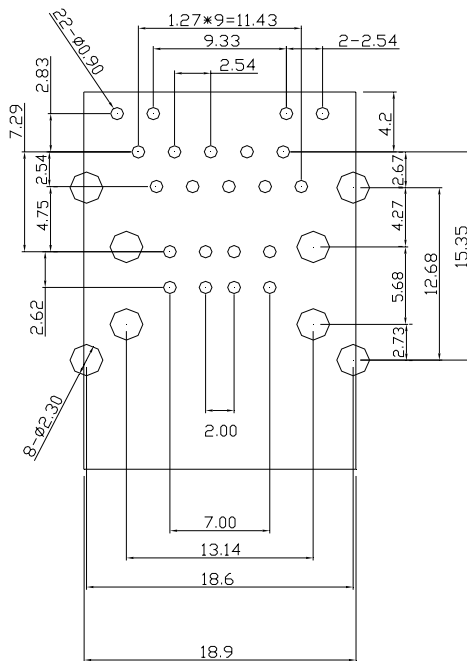
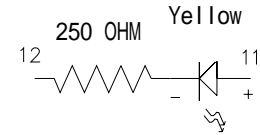
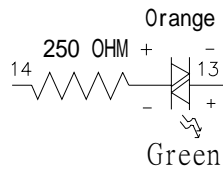
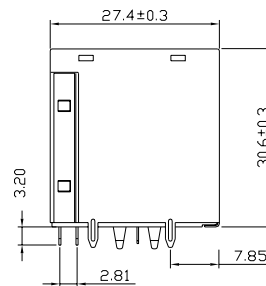
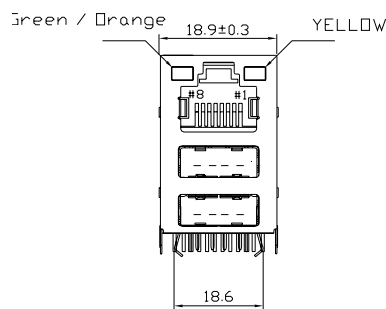
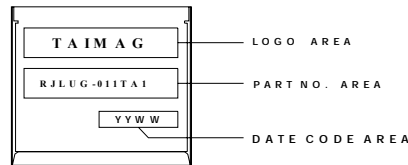


NUMBER:RD-SDRJLUG-011TA1  
 DATE : 2005/09/08 I (REV:A1)

# Model NO.: RJLUG-011TA1

Dimension: mm

TOLERANCE:±0.15(Unless otherwise specified )

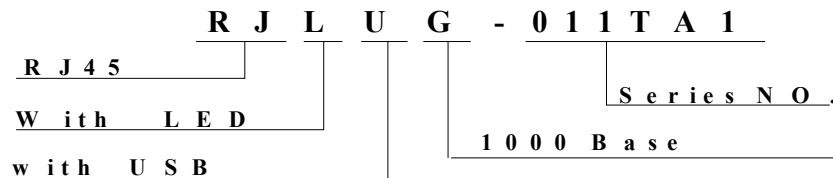


RECOMMENDED P.C.B LAYOUT  
 COMPONENT SIDE OF BOARD



**Model NO.: RJLUG-011TA1**

## Ordering Information



## Requirements :

## Requirements :

### 1. Design and Construction

Product shall be of design, construction and physical dimensions specified on applicable product drawing.

### 2. Materials and Finish

#### A. Contact:

**RJ Contact : Phosphor Bronze, Thickness=0.30mm**

**Finish : (a) Contact Area : 6 $\mu$ "min. Gold over 50 $\mu$ "min. Nickel**

**RJ Joint Contact : Brass, Thickness=0.30mm**

**Finish : 80 $\mu$ "min. Sn over 50 $\mu$ "min. Nickel**

**USB Contact : Phosphor Bronze, Thickness=0.25mm**

**Finish : (a) Contact Area : 30 $\mu$ "min. Gold over 50 $\mu$ "min. Nickel**

**LED Joint Contact : Brass, Thickness=0.30mm**

**Finish : 80 $\mu$ "min. Sn over 50 $\mu$ "min. Nickel**

#### B. Plastic Part :

**(1) Set Housing : Thermoplastic, PBT, Black**

**UL FILE NO. : E107536**

**Manufacturer : SHIKONG SYNTHETIC FIBERS CORP.**

**Grade : E202G30BK**

**Flame Class : UL 94V-0**

**(2) Insert : Thermoplastic, PBT, Black**

**UL FILE NO. : E107536**

**Manufacturer : SHIKONG SYNTHETIC FIBERS CORP.**

**Grade : E202G30BK**

**Flame Class : UL 94V-0**



NUMBER:RD-SDRJLUG-011TA1  
DATE : 2005/09/08 I (REV:A1)

---

## **Model NO.: RJLUG-011TA1**

**(3) Spacer : Thermoplastic, PBT, Black**

**UL FILE NO. : E107536**

**Manufacturer : SHIKONG SYNTHETIC FIBERS CORP.**

**Grade : E202G30BK**

**Flame Class : UL 94V-0**

**(4) USB Housing : Thermoplastic, PBT, Black**

**UL FILE NO. : E107536**

**Manufacturer : SHIKONG SYNTHETIC FIBERS CORP.**

**Grade : E202G30BK**

**Flame Class : UL 94V-0**

### **C. Shield Material :**

**Cartridge  $t=0.25\text{mm}$**

**10  $\mu$ ”-20  $\mu$ ” Thick Nickel over Brass**

### **D. LED Lamp**

**(a) Lens Color : Transparent with color**

**(b) Emitted Color : Green, Orange & Yellow**

**(c) View Angle : 65°**

**(d) Wave Length : Green 565nm ; Orange 610nm ; Yellow 585nm**

**(e) Recommended operation current (IF) : 20 mA**

## **3. Ratings**

**(1) Voltage rating : 125 VAC**

**(2) Current rating : 1.5A**

## **Durability :**

**(1) 1000 cycles with no function damage for RJ-45 . Abnormalities shall be present after the test.**

**(2) Low Level Contact Resistance :  $\Delta R=30\text{m}\Omega$  maximum (final)**

**(3) The sample should be mounted in the tester and fully mated and unmated 500 times per hour at the rate of 25mm/min. EIA-364-09C.**



NUMBER:RD-SDRJLUG-011TA1  
DATE : 2005/09/08 I (REV:A1)

## Model NO.: RJLUG-011TA1

1. Unit weight :20.6 grams
2. package : 50 pcs / tray / 1.044 kgms
3. Carton : 400 pcs / 8 layers of tray
4. Gross weight : 8.964 kgms

### Package drawing:

