

Single 10/100 BASE-TX Filtered Connector Integrated LED Support Auto MDIX

MODEL NO. : TJLC-001LA1

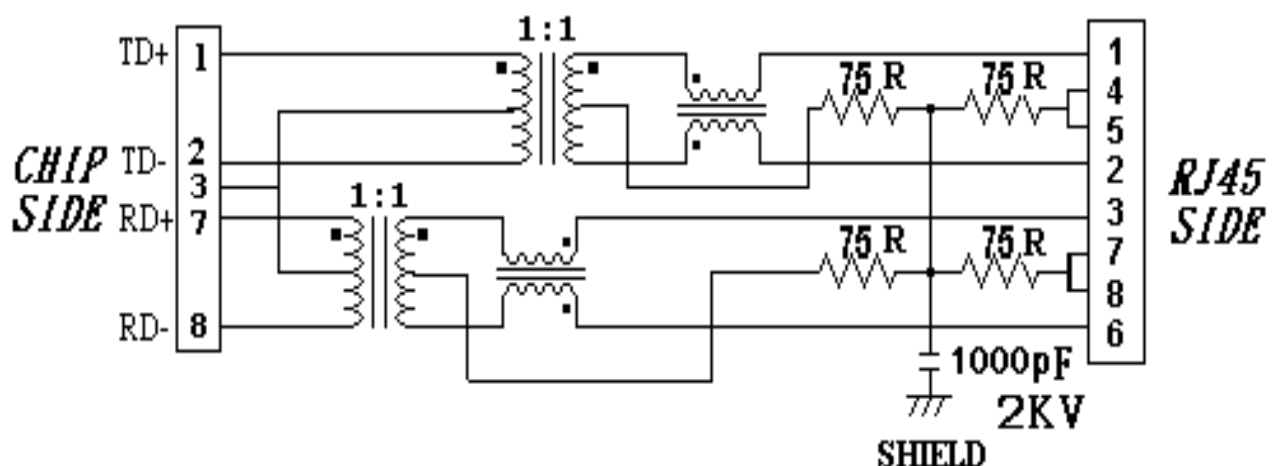
Features :

- ⊙ RoHS Compliant
- ⊙ Fully shielded magnetics protect data from internally generated digital noise
- ⊙ Reduces the overall length of the signal path for improved common mode performance
- ⊙ Implements full common mode termination scheme with used and unused twisted pairs
- ⊙ Meets IEEE802.3 Baseline Wander Compensation specification
- ⊙ Integrates high voltage capacitor to chassis ground
- ⊙ Supports all major transceivers with matched turns ration and complete integration of specified termination
- ⊙ Design for 100base-tx transmission over UTP-5 cable
- ⊙ Operating TEMP. range: -40°C to +85°C
- ⊙ Storage TEMP. range: -55°C to + 125°C
- ⊙ Primary OCL inductance: 350μH MIN. at 100KHz/0.1Vrms with 8mA DC bias

Typical Performance Characteristics @25°C

Insertion Loss (dB MAX)	Return Loss (dB Min @100±15Ω)				Differential to Common Mode Rejection (dB MIN)	Cross talk (dB MIN)					CMRR (dB MIN)	Isolation Voltage (Vrms min)
	MHz	MHz	MHz	MHz		MHz	MHz	MHz	MHz	MHz		
1~100	1~30	40	50	60~80	1~100	20	40	60	80	100	1~100	1500
-1.0	-16	-14	-12	-10	-33	-47	-40	-37	-35	-33	-30	

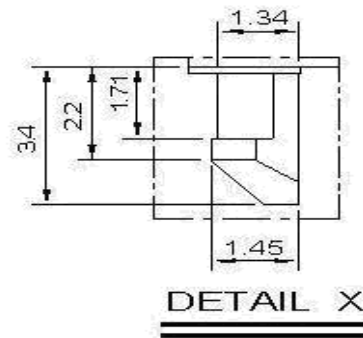
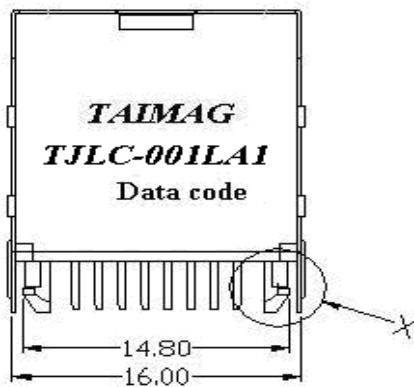
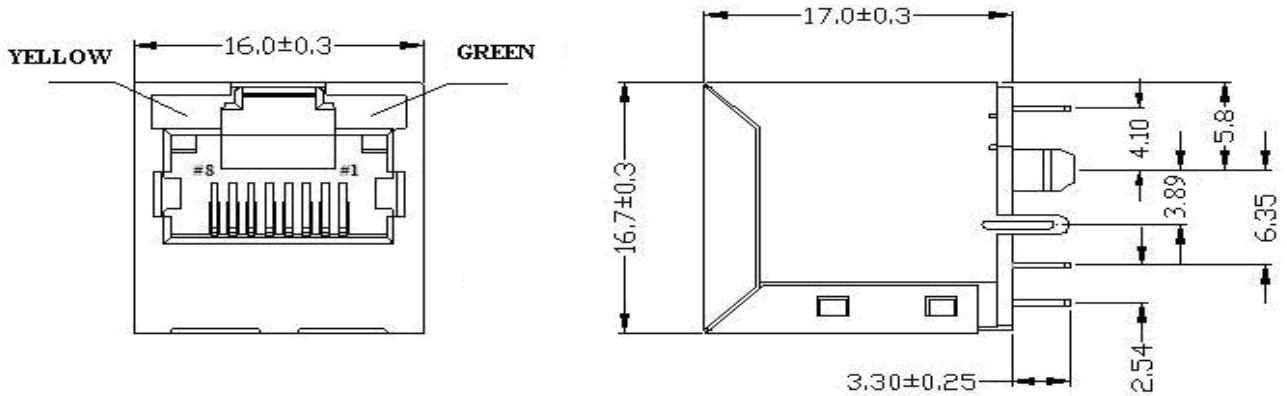
Schematic Design on MDI Interface Circuitry



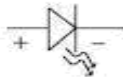
MODEL NO. : TJLC-001LA1

Dimension: mm

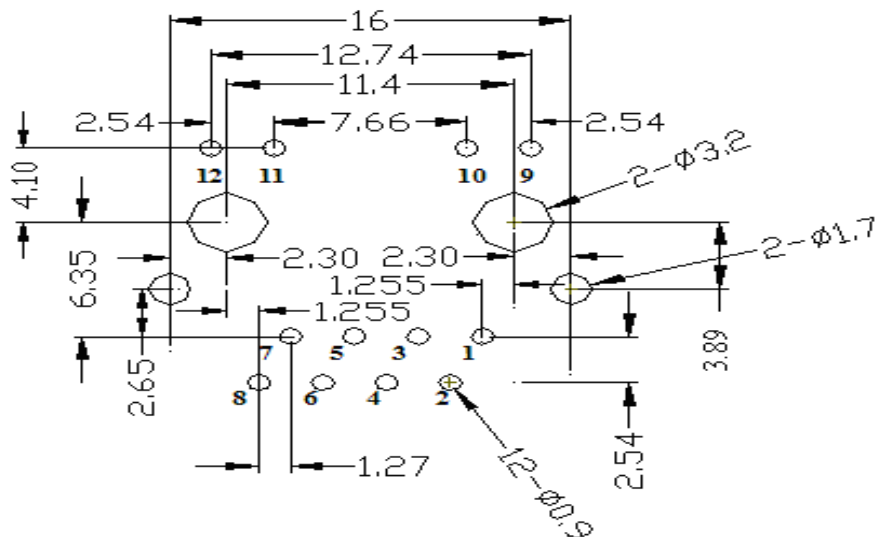
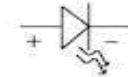
TOLERANCE:±0.15 (unless otherwise specified)



YELLOW



GREEN



SUGGESTED PCB LAYOUT
(TOP VIEW)



NUMBER:RD-SD-TJLC-001LA1
DATE : 2010/07/23 R(REV:A1)

MODEL NO. : TJLC-001LA1

C. Shield Material :

Cartridge $t=0.25\pm 0.05\text{mm}$

$10\ \mu\text{''}$ - $20\ \mu\text{''}$ Thick Nickel over Brass

D. LED Lamp :

(a) Lens Color: Transparent with color

(b) Emitted Color: Green & Yellow

(c) Viewing Angle: 60°

(d) Dominant Wavelength: Green 570nm ; Yellow 585nm

(e) Forward Current / Reverse Voltage : Green 30 mA /(5V) ; Yellow 20 mA /(5V)

(f) Material : Green (GaP/GaP) ; Yellow (GaAsP/GaP)

Durability :

- (1)1000 cycles with no function damage for RJ-45 . Abnormalities shall be present after the test.**
- (2)Low Level Contact Resistance : $\Delta R=30\text{m}\Omega$ maximum (final)**
- (3)The sample should be mounted in the tester and fully mated and unmated 500 times per hour at the rate of 25mm/min.EIA-364-09C.**

MODEL NO. : TJLC-001LA1

1. Unit weight :5.7 grams
2. package : 100 pcs / tray / 0.61 kgms
3. Carton : 1000 pcs / 10 layers of tray
4. Gross weight : 6.6455 kgms

Package drawing:

